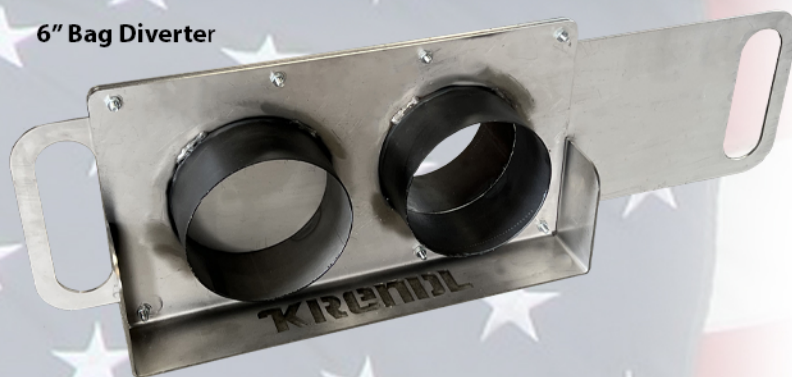


## ANY JOB. ANY SIZE. ANY PLACE.

6" Bag Diverter



The bag diverter is designed to be used on the vacuum outlet to reduce down time between bag changes. The diverter will allow you to fill two bags without stopping for the removal process. Once one bag is filled, simply slide the gate to allow the second bag to begin filling

- Stainless steel construction
- Offered in 6" and 8" hose diameter
- Simple, user friendly design
- Lightweight and portable

Weight:

6" - 24lb (11kg)

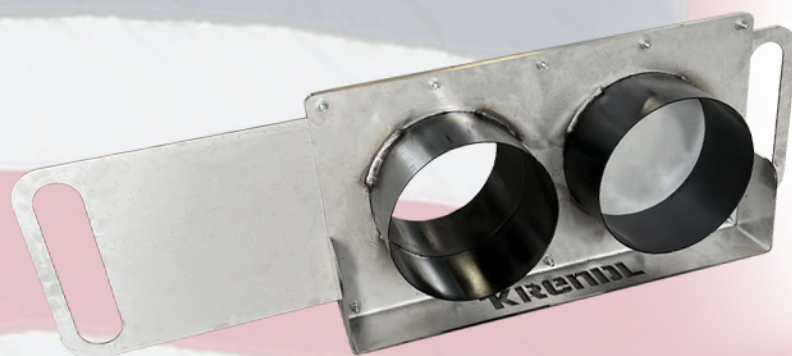
8" - 33lb (15kg)

Dimensions:

6" - 32" x 6" x 10.5" (81cm x 15cm x 26cm)

8" - 38" x 8" x 12.5" (96cm x 20cm x 32cm)

8" Bag Diverter



## AMERICAN MADE.

Backed by a manufacturer's 2-YEAR WARRANTY

## ANY JOB. ANY SIZE. ANY PLACE.

**6" Batt Attachment**



The batt attachment is designed to be used with the GV240 vacuum. The attachment is used to funnel fiberglass batting into the hose for a faster, easier removal process.

- Heavy duty steel construction
- Handles for easy portability or securing to a joist
- For use with our 6" and 8" removal hose

**8" Batt Attachment**



**Weight**

6" - 10lb (4.5kg)

8" - 12lb (5.4kg)

**Dimensions**

6" - 18" x 18.5" x 6" (45cm x 47cm x 15cm)

8" - 18" x 18.5" x 8" (45cm x 47cm x 20cm)

## AMERICAN MADE.

Backed by a manufacturer's 2-YEAR WARRANTY